



RWEMPOGO-KAMUSHOKO  
BUBAARE, MBARARA DISTRICT, UGANDA  
P. O BOX 11063 KAMPALA UGANDA Tel. 077 595077  
Email: [muhangifarm@gmail.com](mailto:muhangifarm@gmail.com)



## MUHANGI DAIRY FARM LIMITED, PROFILE BACKGROUND

MUHANGI DAIRY FARM LTD is located in the village of RWEMPOGO -KAMUSHOKO, BUBAARE Sub country in Mbarara District. The farm has been in existence for over 50 years but practiced traditional free range type of farming with over 300 cows.

## Our mission

MUHANGI Dairy will be the center for processing dairy products, and rearing and selling improved dairy breeds through embryo transfer and artificial insemination

## Our vision

To be a breeder, value addition farm factory for all dairy animals and products in the whole world.



In 2015, MUHANGI Dairy Farm Ltd was transformed into zero grazing modern method of farming to rear high quality cows for milk production. This was after a study tour at Dairy Academy School in the Netherlands and Canada where the director studied livestock and dairy improvement hands on practice.

## CURRENT STATUS OF THE FARM



We rear over 100 cows and our current milk production capacity is 1000 litres per day but we are targeting to reach at least 2000 litres per day and a maximum of 4000 litres per day. We are already established with a milking parlor for milking 10 cows at one input and a milk cooler with the capacity of 4000 litres. We have biogas on site which we intend to develop for

energy supply. Further, the farm has over 70 acres of both Chloris Gayana, Napier and Hyperemia Luff where we harvest hay. We support out growers with seeds and they produce maize which we buy to process silage. We have the solar lighting system and 3 phase electricity on the farm. We have a perfect water system with a solar pump at the dam and good reservoir for water storage. The farm owns a tractor with a plough and a harrow, 2 silage processing machines, maize mill machine, truck and the vehicle for the manager. We have over 20 workers and we hire casual labor from time to time. The farm also owns 7 acres of banana plantation which production ranges between 200-300 bunches of banana per month



## Yoghurt Factory

In Dec 2020, the farm established a yoghurt process factory. We intend to purchase other dairy machines and set up a production chain machinery for cheese, yogurt, butter, pasteurized milk, ice cream, butter and ghee. We are now adding value to our raw milk production. we have been working with kashaka dairy





farmers' cooperative union which sells us milk and crop farm out growers willing to sell us milk per day and their fodder. we are currently processing 2000 litres. We project to process 10,000 per day for all products if the machines can be available.

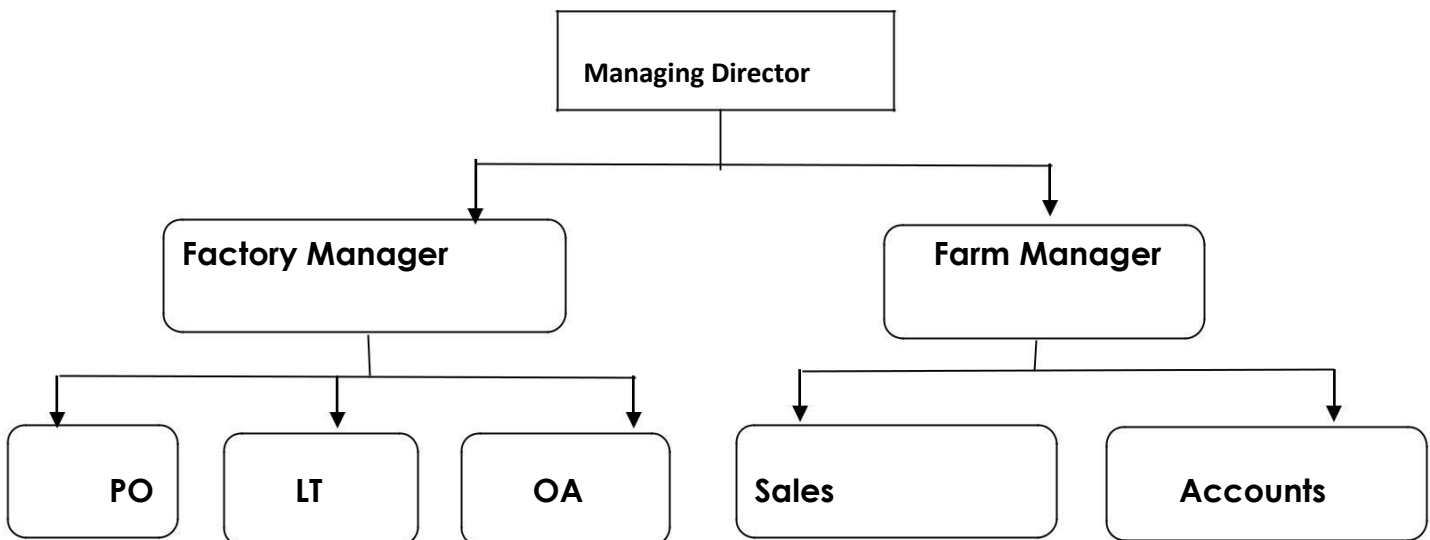
**Social Impact:** Encouraging Youth and women entrepreneurship thru hands on dairy practice training and encouraging them to invest in dairy farming. In so doing, we create employment and impact entrepreneurial skills



**Sales and Marketing:** we sale our yoghurt product to the following districts in western Uganda Fort portal, Kasese, Rukungiri, Ntungamo, Bushenyi, Mitoma, Sheema, Mbarara and Kiruhura



#### ORGANIZATION STRUCTURE



## SILAGE PROCESSING

We make silage from maize and grass. Every season, we make over 100,000 tones which we use to feed the cows. Silage is chopped maize stems that have been 'pickled'. The maize are cut and then fermented to keep as much of the nutrients (such as sugars and proteins) as possible. Fermentation at higher pH results in silage that has a bad taste, and lower amounts of sugars and proteins.



## Sale of Cows and Embryo Transfer Services



(a) **We sale Live cattle**, (Holstein and Jersey dairy cows) to farmers in Uganda, Kenya, Tanzania, Sudan, South Sudan, Burundi, Rwanda and DRC Congo



(b) **Embryos(Under construction)** ,

- I- Donor Spec-Pedigree & red and white donor
- ii- Sire Specs- Sexed female
- iii- Superior genetic cows



**Climate change Impact:** We are promoting Zero grazing method of farming to address the problem of climate change, land utilization and profitable dairy farming. Many free range farmers have cleared swamps in search for land to graze cows. further, the land is getting small because of increasing population and because of such bottlenecks, many people have lost interest in farming. our farm is working hand in hand with community to encourage dairy farming.



Contact: MUHANGI Dairy Farm Limited  
Email: [muhangifarm@gmail.com](mailto:muhangifarm@gmail.com)  
Web: [www.muhangidairyfarm.com](http://www.muhangidairyfarm.com)  
Tel. +256-777595077 +256-752916550(WhatsApp)